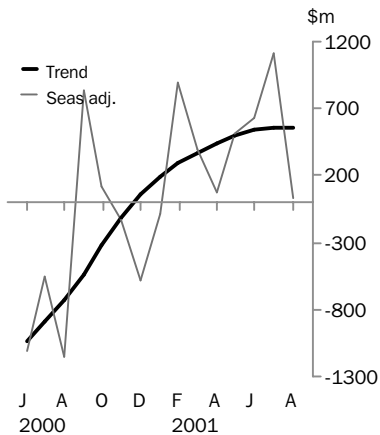


INTERNATIONAL TRADE IN GOODS AND SERVICES

AUSTRALIA

EMBARGO: 11:30AM (CANBERRA TIME) TUES 2 OCT 2001

Balance on goods and services



AUGUST KEY FIGURES

TREND ESTIMATES

	Jun 2001 \$m	Jul 2001 \$m	Aug 2001 \$m	Jul 2001 to Aug 2001 % change
Balance on goods & services	540	558	554	..
Credits (exports of goods & services)	13 166	13 154	13 122	0
Debits (imports of goods & services)	12 626	12 596	12 568	0

SEASONALLY ADJUSTED

	Jun 2001 \$m	Jul 2001 \$m	Aug 2001 \$m	Jul 2001 to Aug 2001 % change
Balance on goods & services	628	1 115	33	..
Credits (exports of goods & services)	13 347	13 154	12 864	-2
Debits (imports of goods & services)	12 719	12 039	12 831	7

AUGUST KEY POINTS

TREND ESTIMATES

- The provisional trend estimate of the balance on goods and services is a surplus of \$554 million in August, a decrease of \$4 million on the surplus in July.
- Goods and services credits fell \$32 million to \$13,122 million, while goods and services debits fell \$28 million to \$12,568 million.

SEASONALLY ADJUSTED ESTIMATES

- In seasonally adjusted terms, the balance on goods and services is a surplus of \$33 million, a decrease of \$1,082 million on the surplus in July and the seventh consecutive surplus.
- Goods and services credits fell \$290 million (2%). Non-rural and other goods fell \$313 million (4%), and rural goods rose \$157 million (6%). Services credits fell \$134 million (5%).
- Goods and services debits rose \$792 million (7%). Consumption goods rose \$146 million (5%), capital goods were down \$73 million (3%) and intermediate and other goods rose \$535 million (12%). Services debits rose \$184 million (7%) on the July result.

ORIGINAL ESTIMATES

- In original terms, the balance on goods and services in August is a deficit of \$444 million, a turnaround of \$1,464 million on the surplus in July.

- For further information about these and related statistics, contact Carol Trickett on Canberra 02 6252 5540, or the National Information and Referral Service on 1300 135 070.

NOTES

FORTHCOMING ISSUES

<i>ISSUE</i>	<i>EXPECTED RELEASE DATE</i>
September 2001	30 October 2001
October 2001	30 November 2001
November 2001	4 January 2002
December 2001	31 January 2002
January 2002	1 March 2002
February 2002	3 April 2002

CHANGES IN THIS ISSUE

Revisions

In original terms, revisions since the previous issue have:

- increased the surplus on goods and services for 2000-2001 by \$345 million; and
- increased the surplus on goods and services for July 2001 by \$26 million.

The major factors contributing to the revisions to the year to date estimate of the surplus on goods and services are:

- incorporation of the latest available data on merchandise exports and imports; and
- incorporation of the latest available services data from administrative sources and the quarterly Survey of International Trade in Services.

Feature article

This issue contains a feature article on Australia's trade in goods and services by country, and international trade in services by State, for calendar year 2000. See page 20.

Explanatory Notes

The Explanatory Notes on pages 17 and 18 have been reviewed and updated.

SYMBOLS AND OTHER USAGES

n.e.s.	not elsewhere specified
n.i.e.	not included elsewhere
n.p.	not published
..	not applicable

Dennis Trewin
Australian Statistician

ANALYSIS AND COMMENTS

BALANCE ON GOODS AND SERVICES

The trend estimate of the balance on goods and services is a surplus of \$554 million in August, a decrease of \$4 million on the surplus in July.

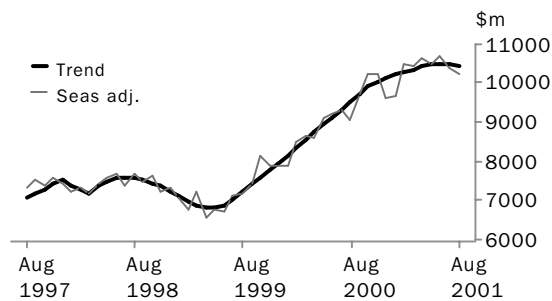
In seasonally adjusted terms, this balance is a surplus of \$33 million, a decrease of \$1,082 million on the surplus in July.

EXPORTS OF GOODS AND SERVICES

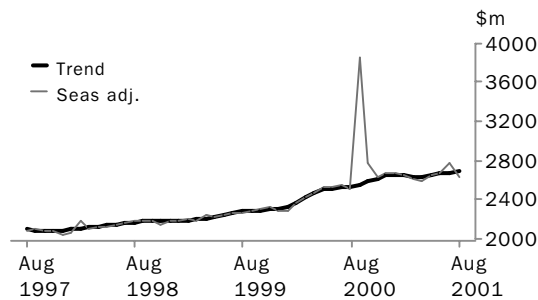
The trend estimate of goods and services credits fell \$32 million to \$13,122 million.

In seasonally adjusted terms, goods and services credits fell \$290 million (2%) to \$12,864 million. Non-rural and other goods fell \$313 million (4%) and rural goods rose \$157 million (6%). Services credits fell \$134 million (5%) to \$2,633 million.

GOODS CREDITS



SERVICES CREDITS



RURAL GOODS The trend estimate of rural goods was up \$35 million to \$2,623 million. In seasonally adjusted terms, rural goods rose \$157 million (6%) to \$2,683 million. Rural goods, in original terms, rose \$96 million (4%) to \$2,570 million. The main contributors to this increase were:

- cereal and cereal preparations, up \$63 million (16%) to \$469 million, due mainly to increased exports of wheat and rice; and
- wool and sheepskins, up \$21 million (7%) to \$312 million, due mainly to a rise in greasy wool export volumes, up \$24 million (15%).

ANALYSIS AND COMMENTS

NON-RURAL AND OTHER GOODS The trend estimate of non-rural and other goods fell \$79 million to \$7,809 million. In seasonally adjusted terms, non-rural and other goods decreased \$313 million (4%) to \$7,548 million.

Non-rural and other goods, in original terms, fell \$161 million (2%) to \$7,991 million. Non-rural goods fell \$165 million with the largest decreases in:

- metal, ores and minerals, down \$151 million (11%) to \$1,274 million, with decreased exports of alumina, copper ore and non-agglomerated iron ore; and
- metals (excluding non-monetary gold), down \$149 million (16%) to \$785 million.

These falls were partly offset by a rise in 'other' non-rural, up \$113 million (16%).

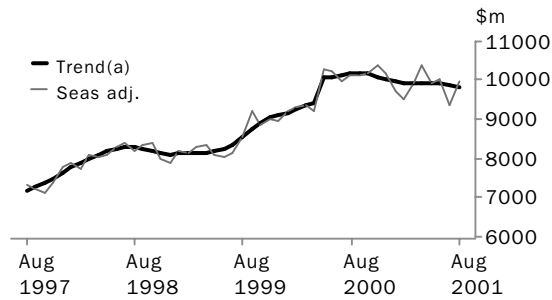
Other goods rose \$4 million (1%) to \$604 million, with the main increase in goods for processing, up \$55 million (138%), mainly due to re-exports of gold for processing rising \$54 million (145%). This rise was partly offset by a fall in non-monetary gold, down \$43 million (9%) mainly due to decreased export volumes of gold bullion.

IMPORTS OF GOODS AND SERVICES

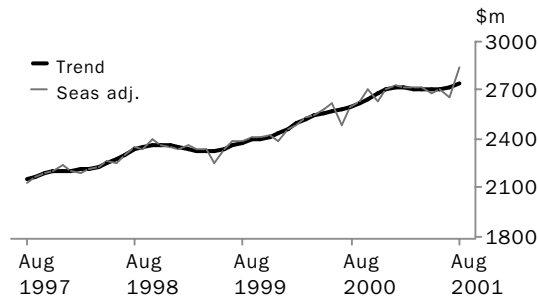
The trend estimate of goods and services debits fell \$28 million to \$12,568 million.

In seasonally adjusted terms, goods and services debits rose \$792 million (7%) to \$12,831 million. Goods rose \$608 million (6%) to \$9,993 million, and services rose \$184 million (7%) to \$2,838 million.

GOODS DEBITS



SERVICES DEBITS



ANALYSIS AND COMMENTS

CONSUMPTION GOODS The trend estimate of consumption goods fell slightly to \$3,008 million in August. Seasonally adjusted, consumption goods rose \$146 million (5%) to \$3,049 million. Consumption goods in original terms rose \$192 million (6%) to \$3,358 million. There were rises in all categories, with the largest increases in:

- textiles, clothing and footwear, up \$51 million (11%) to \$504 million;
- household electrical items, up \$48 million (21%) to \$281 million; and
- consumption goods nes, up \$45 million (5%) to \$1,022 million.

CAPITAL GOODS The trend estimate of capital goods rose \$13 million to \$2,047 million in August. In seasonally adjusted terms, capital goods fell \$73 million (3%) to \$2,047 million. Capital goods, in original terms, rose \$166 million (8%) to \$2,249 million. There were increases in:

- machinery and industrial equipment, up \$127 million (16%) to \$914 million; and
- telecommunications equipment, up \$58 million (19%) to \$367 million.

These increases were partly offset by decreases in:

- ADP equipment, down \$41 million (10%) to \$376 million; and
- capital goods nes, down \$13 million (4%) to \$308 million.

INTERMEDIATE AND OTHER GOODS In August the trend estimate of intermediate and other goods fell \$56 million to \$4,774 million. In seasonally adjusted terms, intermediate and other goods rose \$535 million (12%) to \$4,897 million. Intermediate and other goods, in original terms, rose \$348 million (8%) to \$4,985 million. The largest increases were in:

- parts for transport equipment, up \$112 million (20%) to \$665 million;
- organic and inorganic chemicals, up \$94 million (36%) to \$354 million;
- goods for processing, up \$76 million (33%) to \$304 million; and
- fuels and lubricants, up \$66 million (9%) to \$785 million, with crude petroleum up \$106 million (19%).

These increases were partly offset by decreases in:

- other parts for capital goods, down \$40 million (5%) to \$715 million;
- parts for ADP equipment, down \$23 million (12%) to \$170 million; and
- non-monetary gold, down \$17 million (46%) to \$20 million.

GOODS AND SERVICES(a), Summary: **Seasonally Adjusted and Trend**

Period	CREDITS.....						DEBITS.....					
	Balance on goods and services	Total goods and services	Total goods	Rural goods(b)	Non-rural and other goods(b)	Total services	Total goods and services	Total goods	Con-sumption goods	Capital goods	Inter-mediate and other goods	Total services
	\$m	\$m	\$m	\$m	\$m	\$m	\$m	\$m	\$m	\$m	\$m	\$m
SEASONALLY ADJUSTED												
2000												
June	-1 109	11 757	9 224	2 118	7 106	2 533	-12 866	-10 243	-2 792	-2 363	-5 088	-2 623
July	- 555	11 893	9 336	2 284	7 052	2 557	-12 448	-9 966	-2 942	-2 298	-4 726	-2 482
August	-1 161	11 543	9 039	2 262	6 777	2 504	-12 704	-10 113	-2 934	-2 293	-4 886	-2 591
September	828	13 593	9 728	2 380	7 348	3 865	-12 765	-10 131	-2 918	-2 173	-5 040	-2 634
October	121	13 002	10 230	2 519	7 711	2 772	-12 881	-10 178	-2 932	-2 252	-4 994	-2 703
November	- 125	12 883	10 242	2 514	7 728	2 641	-13 008	-10 373	-3 171	-2 243	-4 959	-2 635
December	- 588	12 322	9 645	2 168	7 477	2 677	-12 910	-10 200	-3 076	-2 145	-4 979	-2 710
2001												
January	-86	12 365	9 691	2 113	7 578	2 674	-12 451	-9 720	-2 940	-2 030	-4 750	-2 731
February	895	13 129	10 476	2 310	8 166	2 653	-12 234	-9 514	-2 790	-2 047	-4 677	-2 720
March	399	13 043	10 421	2 523	7 898	2 622	-12 644	-9 931	-3 016	-2 029	-4 886	-2 713
April	74	13 201	10 618	2 501	8 117	2 583	-13 127	-10 411	-3 171	-1 980	-5 260	-2 716
May	506	13 126	10 478	2 517	7 961	2 648	-12 620	-9 935	-2 964	-1 994	-4 977	-2 685
June	628	13 347	10 675	2 577	8 098	2 672	-12 719	-10 012	-3 021	-1 968	-5 023	-2 707
July	1 115	13 154	10 387	2 526	7 861	2 767	-12 039	-9 385	-2 903	-2 120	-4 362	-2 654
August	33	12 864	10 231	2 683	7 548	2 633	-12 831	-9 993	-3 049	-2 047	-4 897	-2 838
TREND ESTIMATES												
2000												
June	-1 035	11 630	9 112	2 171	6 941	2 518	-12 665	-10 093	-2 831	-2 287	-4 975	-2 572
July	- 891	11 821	9 296	2 236	7 060	2 525	-12 712	-10 130	-2 883	-2 291	-4 956	-2 582
August	- 729	12 043	9 508	2 317	7 191	2 535	-12 772	-10 174	-2 937	-2 285	-4 952	-2 598
September	- 539	12 279	9 724	2 400	7 324	2 555	-12 818	-10 196	-2 981	-2 261	-4 954	-2 622
October	- 327	12 492	9 906	2 464	7 442	2 586	-12 819	-10 168	-3 004	-2 224	-4 940	-2 651
November	- 114	12 668	10 048	2 499	7 549	2 620	-12 782	-10 102	-3 009	-2 180	-4 913	-2 680
December	65	12 792	10 147	2 506	7 641	2 645	-12 727	-10 024	-3 003	-2 136	-4 885	-2 703
2001												
January	191	12 869	10 216	2 495	7 721	2 653	-12 678	-9 963	-2 995	-2 088	-4 880	-2 715
February	287	12 932	10 284	2 480	7 804	2 648	-12 645	-9 930	-2 991	-2 043	-4 896	-2 715
March	363	13 002	10 362	2 475	7 887	2 640	-12 639	-9 928	-2 990	-2 013	-4 925	-2 711
April	441	13 087	10 447	2 490	7 957	2 640	-12 646	-9 940	-2 996	-2 002	-4 942	-2 706
May	500	13 147	10 497	2 520	7 977	2 650	-12 647	-9 942	-3 006	-2 008	-4 928	-2 705
June	540	13 166	10 501	2 554	7 947	2 665	-12 626	-9 915	-3 010	-2 020	-4 885	-2 711
July	558	13 154	10 476	2 588	7 888	2 678	-12 596	-9 873	-3 009	-2 034	-4 830	-2 723
August	554	13 122	10 432	2 623	7 809	2 690	-12 568	-9 829	-3 008	-2 047	-4 774	-2 739

(a) For sign conventions, see paragraph 8 of the Explanatory Notes.

(b) For all time periods, estimates for Sugar, sugar preparations and honey are included in Other non-rural.

GOODS AND SERVICES(a), Summary: Original

Period	CREDITS.....						DEBITS.....					
	Balance on goods and services	Total goods and services	Total goods	Rural goods(b)	Non-rural and other goods(b)	Total services	Total goods and services	Total goods	Con-sumption goods	Capital goods	Inter-mediate and other goods	Total services
	\$m	\$m	\$m	\$m	\$m	\$m	\$m	\$m	\$m	\$m	\$m	\$m
1998-1999	-14 428	112 025	85 783	21 862	63 921	26 242	-126 453	-98 427	-28 041	-23 055	-47 331	-28 026
1999-2000	-14 351	125 972	97 655	23 617	74 038	28 317	-140 323	-110 610	-30 781	-26 695	-53 134	-29 713
2000-2001	1 052	153 131	120 308	28 640	91 668	32 823	-152 079	-120 116	-35 774	-25 391	-58 951	-31 963
2000												
June	-1 468	11 580	9 270	2 065	7 205	2 310	-13 048	-10 339	-2 650	-2 626	-5 063	-2 709
July	-405	12 277	9 386	2 175	7 211	2 891	-12 682	-10 054	-3 107	-2 227	-4 720	-2 628
August	-1 722	11 731	9 392	2 220	7 172	2 339	-13 453	-10 824	-3 296	-2 464	-5 064	-2 629
September	406	13 433	9 797	2 296	7 501	3 636	-13 027	-10 181	-3 069	-2 168	-4 944	-2 846
October	-846	13 344	10 617	2 552	8 065	2 727	-14 190	-11 274	-3 409	-2 347	-5 518	-2 916
November	-660	13 025	10 473	2 563	7 910	2 552	-13 685	-11 110	-3 466	-2 432	-5 212	-2 575
December	1 023	13 011	10 336	2 425	7 911	2 675	-11 988	-9 361	-2 833	-1 948	-4 580	-2 627
2001												
January	-703	11 363	8 345	1 943	6 402	3 018	-12 066	-9 281	-2 638	-1 958	-4 685	-2 785
February	1 940	12 817	9 649	2 213	7 436	3 168	-10 877	-8 515	-2 539	-1 699	-4 277	-2 362
March	494	13 134	10 608	2 644	7 964	2 526	-12 640	-10 060	-3 041	-2 014	-5 005	-2 580
April	388	12 723	10 246	2 425	7 821	2 477	-12 335	-9 694	-2 822	-1 895	-4 977	-2 641
May	396	13 141	10 803	2 660	8 143	2 338	-12 745	-10 107	-2 794	-2 127	-5 186	-2 638
June	741	13 132	10 656	2 524	8 132	2 476	-12 391	-9 655	-2 760	-2 112	-4 783	-2 736
July	1 020	13 743	10 626	2 474	8 152	3 117	-12 723	-9 886	-3 166	-2 083	-4 637	-2 837
August	-444	13 021	10 561	2 570	7 991	2 460	-13 465	-10 592	-3 358	-2 249	-4 985	-2 873

(a) For sign conventions, see paragraph 8 of the Explanatory Notes.

(b) For all time periods, estimates for Sugar, sugar preparations and honey are included in Other non-rural.

GOODS CREDITS: Original

RURAL GOODS.....

<i>Period</i>	<i>Total goods</i>	<i>Total rural goods(a)</i>	<i>Meat and meat preparations</i>	<i>Cereal grains and cereal preparations</i>	<i>Sugar, sugar preparations and honey(a)</i>	<i>Wool and sheepskins</i>	<i>Other rural</i>
<i>\$m</i>	<i>\$m</i>	<i>\$m</i>	<i>\$m</i>	<i>\$m</i>	<i>\$m</i>	<i>\$m</i>	<i>\$m</i>
1998-1999	85 783	21 862	4 008	5 046	n.p.	2 583	10 225
1999-2000	97 655	23 617	4 467	4 941	n.p.	2 963	11 246
2000-2001	120 308	28 640	5 795	5 465	n.p.	3 897	13 483
2000							
June	9 270	2 065	424	374	n.p.	289	978
July	9 386	2 175	444	400	n.p.	274	1 057
August	9 392	2 220	423	447	n.p.	240	1 110
September	9 797	2 296	441	464	n.p.	304	1 087
October	10 617	2 552	534	498	n.p.	390	1 130
November	10 473	2 563	496	518	n.p.	402	1 147
December	10 336	2 425	468	449	n.p.	323	1 185
2001							
January	8 345	1 943	299	406	n.p.	237	1 001
February	9 649	2 213	447	411	n.p.	318	1 037
March	10 608	2 644	566	487	n.p.	443	1 148
April	10 246	2 425	531	443	n.p.	326	1 125
May	10 803	2 660	545	578	n.p.	332	1 205
June	10 656	2 524	601	364	n.p.	308	1 251
July	10 626	2 474	545	406	n.p.	291	1 232
August	10 561	2 570	552	469	n.p.	312	1 237

(a) For all time periods, estimates for Sugar, sugar preparations and honey are included in Other non-rural.

GOODS CREDITS: **Original** *continued*

NON-RURAL GOODS.....

<i>Period</i>	<i>Total non-rural goods(a)</i>	<i>Metal ores and minerals</i>	<i>Coal, coke and briquettes</i>	<i>Other mineral fuels</i>	<i>Metals (excl. gold)</i>	<i>Machinery</i>	<i>Transport equipment</i>	<i>Other manufactures</i>	<i>Other non-rural(a)</i>	<i>Other goods(b)</i>
<i>\$m</i>	<i>\$m</i>	<i>\$m</i>	<i>\$m</i>	<i>\$m</i>	<i>\$m</i>	<i>\$m</i>	<i>\$m</i>	<i>\$m</i>	<i>\$m</i>	<i>\$m</i>
1998-1999	56 461	11 037	9 288	4 461	6 984	6 569	3 343	10 273	4 506	7 460
1999-2000	66 483	11 760	8 336	9 082	8 810	7 133	4 597	11 529	5 236	7 555
2000-2001	84 259	15 245	10 832	13 457	10 138	8 798	5 041	13 508	7 240	7 409
2000										
June	6 526	1 241	788	1 074	868	737	326	1 015	477	679
July	6 631	1 105	868	1 168	783	694	443	1 061	509	580
August	6 644	1 289	805	1 005	817	663	372	1 049	644	528
September	6 967	1 204	846	1 177	737	815	384	1 178	626	534
October	7 407	1 308	908	1 274	914	760	368	1 163	712	658
November	7 347	1 316	789	1 292	948	743	480	1 187	592	563
December	7 410	1 344	894	1 357	818	754	516	1 172	555	501
2001										
January	5 844	1 165	870	1 074	725	483	221	862	444	558
February	6 807	1 130	818	997	786	1 007	425	1 081	563	629
March	7 327	1 315	877	1 040	947	711	518	1 261	658	637
April	7 249	1 337	1 007	1 093	914	700	392	1 124	682	572
May	7 294	1 331	1 063	1 025	835	727	529	1 183	601	849
June	7 332	1 401	1 087	955	914	741	393	1 187	654	800
July	7 552	1 425	1 107	1 128	934	684	392	1 176	706	600
August	7 387	1 274	1 092	1 042	785	733	450	1 192	819	604

(a) For all time periods, estimates for Sugar, sugar preparations and honey are included in Other non-rural. (b) Includes non-monetary gold.

GOODS DEBITS(a): Original

CONSUMPTION GOODS.....

<i>Period</i>	<i>Total goods</i>	<i>Total consumption goods</i>	<i>Food and beverages, mainly for consumption</i>	<i>Household electrical items</i>	<i>Non-industrial transport equipment</i>	<i>Textiles, clothing and footwear</i>	<i>Toys, books and leisure goods</i>	<i>Consumption goods n.e.s.</i>
	<i>\$m</i>	<i>\$m</i>	<i>\$m</i>	<i>\$m</i>	<i>\$m</i>	<i>\$m</i>	<i>\$m</i>	<i>\$m</i>
1998-1999	-98 427	-28 041	-3 606	-2 245	-7 231	-3 739	-3 184	-8 036
1999-2000	-110 610	-30 781	-3 943	-2 456	-7 735	-4 232	-3 238	-9 177
2000-2001	-120 116	-35 774	-4 483	-2 998	-9 626	-4 811	-3 361	-10 495
2000								
June	-10 339	-2 650	-291	-215	-796	-291	-286	-771
July	-10 054	-3 107	-365	-261	-844	-432	-282	-923
August	-10 824	-3 296	-392	-300	-766	-513	-347	-978
September	-10 181	-3 069	-353	-262	-804	-425	-328	-897
October	-11 274	-3 409	-399	-313	-891	-437	-384	-985
November	-11 110	-3 466	-408	-359	-924	-416	-343	-1 016
December	-9 361	-2 833	-410	-268	-809	-307	-243	-796
2001								
January	-9 281	-2 638	-355	-203	-640	-451	-227	-762
February	-8 515	-2 539	-340	-191	-660	-422	-204	-722
March	-10 060	-3 041	-389	-226	-864	-450	-239	-873
April	-9 694	-2 822	-361	-208	-805	-363	-236	-849
May	-10 107	-2 794	-364	-203	-772	-301	-272	-882
June	-9 655	-2 760	-347	-204	-847	-294	-256	-812
July	-9 886	-3 166	-379	-233	-800	-453	-324	-977
August	-10 592	-3 358	-397	-281	-824	-504	-330	-1 022

(a) For sign conventions, see paragraph 8 of the Explanatory Notes.

GOODS DEBITS(a): **Original** *continued*

CAPITAL GOODS.....

<i>Period</i>	<i>Total capital goods</i>	<i>Machinery and industrial equipment</i>	<i>ADP equipment</i>	<i>Telecommunications equipment</i>	<i>Civil aircraft</i>	<i>Industrial transport equipment n.e.s.</i>	<i>Capital goods n.e.s.</i>
<i>\$m</i>	<i>\$m</i>	<i>\$m</i>	<i>\$m</i>	<i>\$m</i>	<i>\$m</i>	<i>\$m</i>	<i>\$m</i>
1998-1999	-23 055	-9 226	-4 496	-2 812	- 649	-2 860	-3 012
1999-2000	-26 695	-8 912	-4 912	-4 150	-1 414	-3 981	-3 326
2000-2001	-25 391	-8 873	-5 259	-4 376	- 609	-2 753	-3 521
2000							
June	-2 626	- 809	- 589	- 391	- 216	- 332	- 289
July	-2 227	- 744	- 502	- 387	- 2	- 323	- 269
August	-2 464	- 791	- 548	- 448	-64	- 298	- 315
September	-2 168	- 730	- 470	- 356	-93	- 263	- 256
October	-2 347	- 791	- 471	- 530	-20	- 244	- 291
November	-2 432	- 858	- 479	- 502	-45	- 249	- 299
December	-1 948	- 717	- 428	- 360	0	- 187	- 256
2001							
January	-1 958	- 751	- 330	- 233	- 165	- 141	- 338
February	-1 699	- 664	- 308	- 221	-96	- 156	- 254
March	-2 014	- 696	- 423	- 339	-74	- 185	- 297
April	-1 895	- 687	- 409	- 308	-5	- 206	- 280
May	-2 127	- 745	- 440	- 334	-7	- 228	- 373
June	-2 112	- 699	- 451	- 358	-38	- 273	- 293
July	-2 083	- 787	- 417	- 309	0	- 249	- 321
August	-2 249	- 914	- 376	- 367	-28	- 256	- 308

(a) For sign conventions, see paragraph 8 of the Explanatory Notes.

GOODS DEBITS(a): **Original** *continued*

INTERMEDIATE AND OTHER MERCHANDISE GOODS.....

<i>Period</i>	<i>Total intermediate and other merchandise goods</i>	<i>Food and beverages, mainly for industry</i>	<i>Primary industrial supplies n.e.s.</i>	<i>Fuels and lubricants</i>	<i>Parts for transport equipment</i>	<i>Parts for ADP equipment</i>	<i>Other parts for capital goods</i>	<i>Organic and inorganic chemicals</i>
<i>\$m</i>	<i>\$m</i>	<i>\$m</i>	<i>\$m</i>	<i>\$m</i>	<i>\$m</i>	<i>\$m</i>	<i>\$m</i>	<i>\$m</i>
1998-1999	-43 293	- 758	- 882	-4 428	-6 085	-1 944	-7 692	-3 139
1999-2000	-49 073	- 731	-1 117	-7 450	-6 874	-1 936	-8 008	-3 572
2000-2001	-54 604	- 592	-1 139	-10 284	-7 091	-2 255	-9 080	-3 776
2000								
June	-4 760	-50	-95	- 967	- 651	- 215	- 772	- 337
July	-4 445	-59	-80	- 738	- 610	- 202	- 825	- 248
August	-4 824	-50	-82	- 951	- 610	- 193	- 824	- 250
September	-4 662	-53	-114	- 805	- 599	- 186	- 786	- 440
October	-5 220	-42	-96	-1 021	- 652	- 187	- 874	- 269
November	-4 941	-58	-90	- 939	- 703	- 183	- 785	- 276
December	-4 275	-51	-118	- 863	- 556	- 197	- 681	- 277
2001								
January	-4 325	-42	-93	- 882	- 508	- 168	- 689	- 315
February	-3 935	-48	-78	- 642	- 510	- 158	- 670	- 290
March	-4 614	-49	-116	- 908	- 609	- 186	- 731	- 371
April	-4 521	-40	-73	- 776	- 612	- 209	- 710	- 377
May	-4 556	-50	-108	- 891	- 579	- 198	- 763	- 332
June	-4 286	-50	-91	- 868	- 543	- 188	- 742	- 331
July	-4 252	-48	-80	- 719	- 553	- 193	- 755	- 260
August	-4 530	-50	-87	- 785	- 665	- 170	- 715	- 354

(a) For sign conventions, see paragraph 8 of the Explanatory Notes.

GOODS DEBITS(a): **Original** *continued*INTERMEDIATE AND OTHER MERCHANDISE GOODS *continued*.....

Period	<i>Paper and paperboard</i>	<i>Textile yarn and fabrics</i>	<i>Iron and steel</i>	<i>Plastics</i>	<i>Processed industrial supplies n.e.s.</i>	<i>Other merchandise goods</i>	<i>Other goods(b)</i>
	\$m	\$m	\$m	\$m	\$m	\$m	\$m
1998-1999	-1 978	-2 006	-1 470	-1 889	-10 140	- 882	-4 038
1999-2000	-2 207	-1 987	-1 509	-2 037	-10 772	- 873	-4 061
2000-2001	-2 311	-1 863	-1 437	-2 193	-11 263	-1 320	-4 347
2000							
June	- 181	- 177	- 124	- 173	- 950	-68	- 303
July	- 197	- 171	- 117	- 174	- 946	-78	- 275
August	- 209	- 188	- 123	- 191	-1 071	-82	- 240
September	- 214	- 163	- 125	- 183	- 934	-60	- 282
October	- 239	- 176	- 132	- 200	-1 039	- 293	- 298
November	- 229	- 163	- 142	- 200	-1 030	- 143	- 271
December	- 186	- 124	- 89	- 176	- 829	- 128	- 305
2001							
January	- 180	- 150	- 128	- 192	- 877	- 101	- 360
February	- 172	- 137	- 103	- 162	- 829	- 136	- 342
March	- 196	- 142	- 116	- 191	- 933	-66	- 391
April	- 157	- 135	- 133	- 175	-1 019	- 105	- 456
May	- 163	- 160	- 117	- 177	- 948	-70	- 630
June	- 169	- 154	- 112	- 172	- 808	-58	- 497
July	- 185	- 172	- 140	- 186	- 877	-84	- 385
August	- 200	- 167	- 149	- 185	- 913	-90	- 455

(a) For sign conventions, see paragraph 8 of the Explanatory Notes.

(b) Includes non-monetary gold.

SERVICES(a)(b): Original

Period	CREDITS.....					DEBITS.....				
	Total services	Freight	Other transportation	Travel	Other services	Total services	Freight	Other transportation	Travel	Other services
	\$m	\$m	\$m	\$m	\$m	\$m	\$m	\$m	\$m	\$m
1998-1999	26 242	1 199	5 604	11 944	7 495	-28 026	-5 009	-4 358	-9 044	-9 615
1999-2000	28 317	1 017	5 848	13 139	8 313	-29 713	-5 257	-4 761	-9 836	-9 859
2000-2001	32 823	1 038	7 024	15 344	9 417	-31 963	-5 991	-5 361	-10 788	-9 823
2000										
June	2 310	87	484	973	766	-2 709	-512	-458	-822	-917
July	2 891	83	525	1 565	718	-2 628	-491	-466	-954	-717
August	2 339	83	530	1 012	714	-2 629	-536	-431	-898	-764
September	3 636	85	577	1 280	1 694	-2 846	-476	-487	-1 039	-844
October	2 727	88	650	1 202	787	-2 916	-563	-459	-999	-895
November	2 552	88	590	1 139	735	-2 575	-544	-409	-834	-788
December	2 675	89	588	1 274	724	-2 627	-462	-461	-799	-905
2001										
January	3 018	94	619	1 657	648	-2 785	-479	-448	-1 023	-835
February	3 168	94	619	1 822	633	-2 362	-443	-374	-772	-773
March	2 526	93	620	1 165	648	-2 580	-549	-423	-825	-783
April	2 477	81	569	1 134	693	-2 641	-507	-419	-900	-815
May	2 338	81	569	986	702	-2 638	-494	-464	-868	-812
June	2 476	79	568	1 108	721	-2 736	-447	-520	-877	-892
July	3 117	79	604	1 748	686	-2 837	-460	-524	-1 038	-815
August	2 460	79	602	1 086	693	-2 873	-535	-484	-991	-863

(a) For sign conventions, see paragraph 8 of the Explanatory Notes.

(b) For detailed trade in services by commodity, see Table 6.

SERVICES(a)(b): Original—Quarterly

	CREDITS.....				DEBITS.....			
	Sep Qtr 2000	Dec Qtr 2000	Mar Qtr 2001	Jun Qtr 2001	Sep Qtr 2000	Dec Qtr 2000	Mar Qtr 2001	Jun Qtr 2001
	\$m	\$m	\$m	\$m	\$m	\$m	\$m	\$m
SERVICES	8 866	7 954	8 712	7 291	-8 103	-8 118	-7 727	-8 015
Transportation services	1 883	2 093	2 139	1 947	-2 887	-2 898	-2 716	-2 851
Passenger	1 632	1 828	1 858	1 706	-1 139	-1 060	- 981	-1 157
Freight	251	265	281	241	-1 503	-1 569	-1 471	-1 448
Other	n.p.	n.p.	n.p.	n.p.	- 245	- 269	- 264	- 246
Travel services	3 857	3 615	4 644	3 228	-2 891	-2 632	-2 620	-2 645
Business	273	273	313	320	- 700	- 675	- 743	- 720
Personal	3 584	3 342	4 331	2 908	-2 191	-1 957	-1 877	-1 925
Education-related	1 073	530	1 762	673	- 199	- 149	- 186	- 131
Other	2 511	2 812	2 569	2 235	-1 992	-1 808	-1 691	-1 794
Communications services	373	430	311	350	- 426	- 519	- 420	- 482
Construction services	4	19	19	8	0	0	0	0
Insurance services	184	184	172	169	- 226	- 226	- 215	- 211
Financial services	187	187	187	186	- 132	- 132	- 132	- 132
Computer and information services	186	218	156	240	- 134	- 109	-80	-97
Royalties and licence fees	153	135	143	170	- 443	- 419	- 404	- 422
Other business services	823	741	668	674	- 656	- 802	- 773	- 786
Merchandising and other trade-related	139	124	117	119	-55	-64	-62	-58
Operational leasing	0	3	3	6	- 219	- 234	- 273	- 288
Miscellaneous business, professional & technical	684	614	548	549	- 382	- 504	- 438	- 440
Legal, accounting, management consulting and public relations	100	104	116	92	-35	-63	-58	-43
Advertising, market research, and public opinion polling	23	33	42	30	-15	-29	-26	-40
Research and development	66	69	55	51	-15	-21	-24	-21
Architectural, engineering and other technical services	149	136	106	109	-67	-89	-67	-67
Agricultural, mining, and on-site processing	6	6	8	5	-45	-68	-43	-53
Services between affiliated enterprises n.i.e.	275	200	157	242	- 165	- 194	- 152	- 177
Other	65	66	64	20	-40	-40	-68	-39
Personal, cultural, and recreational services	1 056	165	89	97	- 175	- 224	- 215	- 205
Audiovisual and related services	993	87	23	26	- 146	- 182	- 175	- 174
Other personal, cultural and recreational services	63	78	66	71	-29	-42	-40	-31
Government services n.i.e.	160	167	184	222	- 133	- 157	- 152	- 184

(a) For sign conventions, see paragraph 8 of the Explanatory Notes.

(b) For more information, see paragraphs 11 and 12 of the Explanatory Notes.

PERIOD AVERAGE EXCHANGE RATES(a)

UNITS OF FOREIGN CURRENCY PER AUSTRALIAN DOLLAR.....

<i>Period</i>	<i>United States dollar</i>	<i>United Kingdom pound</i>	<i>Euro</i>	<i>Japanese yen</i>	<i>Special Drawing Right</i>	<i>Trade-weighted index of value of the \$A(b)</i>
1998-1999	0.6276	0.3824	. .	77.81	0.4589	56.0
1999-2000	0.6289	0.3948	0.6278	67.90	0.4642	55.2
2000-2001	0.5379	0.3704	0.6023	61.49	0.4177	50.3
2000						
June	0.5940	0.3935	0.6258	63.05	0.4464	52.9
July	0.5887	0.3900	0.6257	63.50	0.4447	52.9
August	0.5815	0.3903	0.6418	62.83	0.4442	52.6
September	0.5541	0.3865	0.6355	59.17	0.4280	50.8
October	0.5277	0.3634	0.6179	57.20	0.4103	49.0
November	0.5217	0.3657	0.6102	56.83	0.4069	48.8
December	0.5467	0.3741	0.6103	61.30	0.4228	50.9
2001						
January	0.5563	0.3760	0.5919	65.11	0.4271	51.9
February	0.5351	0.3680	0.5804	62.15	0.4138	50.1
March	0.5048	0.3491	0.5543	61.17	0.3941	48.1
April	0.5002	0.3485	0.5597	61.97	0.3947	48.4
May	0.5201	0.3644	0.5936	63.35	0.4118	50.1
June	0.5179	0.3691	0.6064	63.32	0.4142	50.3
July	0.5101	0.3608	0.5934	63.56	0.4079	49.8
August	0.5251	0.3654	0.5823	63.77	0.4120	50.0

(a) These exchange rates and the trade-weighted index are derived using rates provided by the Reserve Bank of Australia in respect of each trading day.

(b) May 1970=100. The Trade-weighted index is reweighted annually (on 1 October) and on special occasions as required.

EXPLANATORY NOTES

INTRODUCTION

1 This publication contains preliminary estimates of Australia's international trade in goods and services on a balance of payments basis. General merchandise imports and exports are derived mainly from international trade statistics, which are based on Australian Customs Service records. Adjustments for coverage and timing are made to international trade statistics to bring them to a balance of payments basis. The main source of services data is the quarterly Survey of International Trade in Services.

2 More comprehensive quarterly estimates of Australia's trade in goods and services, together with comprehensive details of Australia's balance of payments and international investment position statistics are included in the quarterly publication, *Balance of Payments and International Investment Position, Australia* (Cat. no. 5302.0).

CONCEPTS, SOURCES AND METHODS

3 The conceptual framework used in Australia's balance of payments and international investment position statistics is based on the Fifth Edition of the International Monetary Fund's *Balance of Payments Manual* (BPM5, 1993). Descriptions of the underlying concepts and structure of the balance of payments and international investment position, and the sources, methods and terms used in compiling the estimates are presented in *Balance of Payments and International Investment Position, Australia: Concepts, Sources and Methods, 1998* (Cat. no. 5331.0).

SEASONAL ADJUSTMENT

4 Monthly original estimates are volatile, being subject to calendar related and large irregular influences. Seasonally adjusted estimates are derived by estimating and removing systematic calendar related effects, such as seasonal and trading day influences, from the original series. The trading day influences arise from the varying length of months and the varying number of Sundays, Mondays, Tuesdays etc in each month. Seasonal adjustment does not aim to remove the irregular or non-seasonal influences which may be present in any particular month. The irregular influences may reflect both random economic events and difficulties of statistical recording.

5 The factors used in seasonally adjusting the monthly goods and services statistics can be obtained from Balance of Payments Section on Canberra (02) 6252 5878. There is a charge for this service.

TREND ESTIMATES

6 The month-to-month movements of the seasonally adjusted estimates may not be reliable indicators of trend behaviour. For example, irregular factors unrelated to the trend account for more than half the seasonally adjusted monthly movements with the following frequency:

balance on goods and services: 9 in 10 months
goods and services credits: 8 in 10 months
goods and services debits: 8 in 10 months.

7 Trend estimates are derived by applying a 13-term Henderson moving average to the seasonally adjusted series. The 13-term Henderson average (like all Henderson averages) is symmetric, but as the end of a time series is approached, asymmetric forms of the average are applied. While the asymmetric weights enable trend estimates for recent months to be produced, they result in revisions to the estimates for the most recent six months as additional observations become available. There may also be revisions because of changes in the original data and as a result of the re-estimation of the seasonal factors. Details of trend-cycle weighting patterns are available on request from Time Series Analysis Section on Canberra 02 6252 6076.

EXPLANATORY NOTES

SIGN CONVENTION

8 In keeping with balance of payments conventions, credit entries are shown without sign and debit items are shown as negative entries. However, references to debit items in Key Figures, Key Points, and Analysis and Comments are made without regard to sign.

COMMODITY BREAKDOWNS OF GOODS

9 For details of the classification used for rural and non-rural goods see table 6.6 in *Balance of Payments and International Investment Position, Australia: Concepts, Sources and Methods, 1998* (Cat. no. 5331.0).

10 Table 6.7 in 5331.0 provides details of the classification used for goods debits. Most of the 25 commodity groups shown in table 4 for merchandise goods debits are further sub-divided into a total of 106 commodity sub-groups. The information at this level is available as a special data service, and can be obtained from Balance of Payments Section on Canberra 02 6252 6932.

COMMODITY BREAKDOWNS OF SERVICES

11 The quarterly detailed services data published in Table 6 are consistent with the monthly aggregates shown in Table 5. Subject to confidentiality constraints, a further breakdown of services data on a quarterly basis is available on request. Detailed annual data are published for 49 services commodities in the annual publication, *Balance of Payments and International Investment Position, Australia* (Cat. no. 5363.0). Services trade data by major partner countries and by Australian State of production/consumption are published on a financial year basis and a calendar year basis in feature articles in this publication. Additional detail and additional presentations of the data are available on request. For further information contact Balance of Payments Section on Canberra 02 6252 5336.

12 Monthly indicators for many of the services components that are surveyed only quarterly are not available. In particular, the Freight and Other transportation components of Total services credits are not available for publication on a monthly basis. Therefore the estimates for these items shown in table 5 are derived by dividing the quarterly estimate by three.

RELATED PRODUCTS AND SERVICES

13 Detailed data of exports and imports of goods dissected by commodity and country are available on an international trade basis by contacting the National Information and Referral Service. Contact details are shown on the back of this publication.

14 Users may also wish to refer to the following publications which are available from ABS Bookshops:

- *Balance of Payments and International Investment Position, Australia* (Cat. no. 5302.0)—issued quarterly
- *International Merchandise Trade, Australia* (Cat no. 5422.0)—issued quarterly
- *Balance of Payments and International Investment Position, Australia: Concepts, Sources and Methods* (Cat. no. 5331.0)
- *Information Paper: Quality of Australian Balance of Payments Statistics* (Cat. no. 5342.0)
- *International Merchandise Trade, Australia: Concepts, Sources and Methods* (Cat. no. 5489.0)
- *A Guide to Australian Balance of Payments and International Investment Position Statistics* (Cat. no. 5362.0.55.001).

15 The last four publications are located on the ABS website (<www.abs.gov.au>—select [Statistics](#) then select [Statistical Concepts Library](#)).

WHAT IF...? REVISIONS TO TREND ESTIMATES

EFFECT OF NEW SEASONALLY ADJUSTED ESTIMATES ON TREND ESTIMATES

Readers should exercise care in the interpretation of the trend data as the last three observations, in particular, are likely to be revised with the addition of subsequent months' data. For further information, see Explanatory Note 5.

TREND REVISIONS

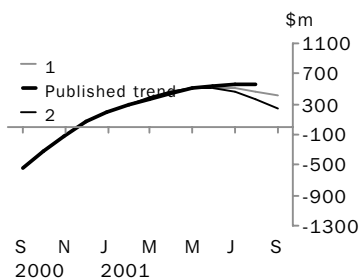
The graph below presents the effect of two possible scenarios on the previous trend estimates:

1 The September seasonally adjusted estimate of the balance on goods and services 'improves' by \$200 million when compared with the August seasonally adjusted estimate. (An 'improvement' refers to an increase in a surplus or a decrease in a deficit.)

2 The September seasonally adjusted estimate of the balance on goods and services 'deteriorates' by \$200 million when compared with the August seasonally adjusted estimate. (A 'deterioration' refers to a decrease in a surplus or an increase in a deficit.)

The change of \$200 million has been chosen because in the last decade the average monthly movement, without regard to sign, of the seasonally adjusted balance on goods and services series has been approximately \$200 million.

BALANCE ON GOODS AND SERVICES



TREND AS PUBLISHED

WHAT IF NEXT MONTH'S SEASONALLY ADJUSTED ESTIMATE:

1

improves by \$200m on Aug 2001
\$m

2

deteriorates by \$200m on Aug 2001
\$m

	TREND AS PUBLISHED	WHAT IF NEXT MONTH'S SEASONALLY ADJUSTED ESTIMATE:	
	\$m	1	2
February 2001	287	287	287
March 2001	363	374	382
April 2001	441	456	470
May 2001	500	508	515
June 2001	540	522	504
July 2001	558	511	452
August 2001	554	472	360
September 2001		422	254

GOODS AND SERVICES BY REGION, 2000

INTRODUCTION

1 This article provides summary calendar year 2000 data both for Australia's trade in goods and services with selected major trading partners, and for Australia's trade in services by State. Table A presents, for Australia's top 12 trading partners (determined by summing the absolute values of both credits and debits for 2000), the goods and services credits and debits and the balances for 1998 to 2000. For 2000, table B extends the analysis to trade in goods and services for 40 countries or country groups. Table C presents, for the same countries and groups as in Table B, three broad services categories. Tables D and E show, for credits and debits respectively, Australia's 2000 trade in services, classified by State, for 11 broad service types with more detailed components also shown.

GOODS AND SERVICES BY COUNTRY

INTERPRETATION OF TRADE DATA BY COUNTRY

2 The quality of statistics of trade in goods and services by country is considered to be good, although there are occasional difficulties due to lack of information or the confidentiality of the trading partners involved. Therefore about 2% of total credits and debits shown in Table B for 2000 remain unallocated. A comprehensive explanation of the data sources used and the methodology applied in the compilation of regional statistics is provided in Chapter 17 of *Balance of Payments and International Investment Position, Australia - Concepts, Sources and Methods* (Cat. no. 5331.0). This publication is located on the ABS website (www.abs.gov.au—select Statistics then select Statistical Concepts Library). Appendix A to this article illustrates the types of services covered by the components of other business services.

ANALYSIS OF AUSTRALIAN TRADE WITH SELECTED PARTNER COUNTRIES

3 The Sydney Olympic Games and Paralympic Games impacted on international trade in 2000. A summary of the major impacts of the Games on international accounts is the subject of a feature article, *The Sydney Olympic Games Update*, contained in the July 2000 issue of this publication.

4 Table A shows that in the calendar year 2000, Australia recorded a deficit of \$7.3 billion in the balance on goods and services, a large improvement (\$9.2 billion) on the deficit for 1999. The selected countries shown in Table A contributed 72% of Australia's total trade in 2000.

5 In terms of major trading partners, the largest contribution to the improvement in the deficit on goods and services was the rise in the surplus with Japan, up \$3.8 billion to \$8.2 billion in 2000. Exports to Japan rose \$5.5 billion and imports rose \$1.7 billion. Also contributing to the improvement in the deficit was the rise in the surplus with the Republic of Korea, up \$1.9 billion to \$4.6 billion in 2000. These improvements were partly offset by a deterioration in the trading positions with the United Kingdom, Peoples Republic of China and Malaysia of \$1.3 billion, \$0.5 billion and \$0.5 billion, respectively.

ANALYSIS OF AUSTRALIAN
TRADE WITH SELECTED
PARTNER COUNTRIES *continued*

6 For 2000, table B presents trade in goods and services for 40 countries or country groups. It shows that, with the exception of the small surpluses with Belgium-Luxembourg, the Netherlands and the Russian Federation, Australia ran trade deficits with all of the identified European trading partners (including the residual category for Europe n.e.s.), with many of those individual deficits over \$1 billion. The balance of trade with the Association of South East Asian Nations (ASEAN) recorded an improvement of \$1.3 billion in 2000, falling from a deficit of \$3.0 billion in 1999.

7 Table C provides further details of the balance of trade in services with selected trading partners for 2000. Sweden was the only identified European partner with which Australia recorded a surplus. Australia recorded surpluses with most of its Asian trading partners, the largest being with Japan at \$1.6 billion. Australia also recorded a surplus with New Zealand (\$0.6 billion). The largest trade in services deficit was recorded with the United States of America at \$0.8 billion.

ABBREVIATIONS

8 The following abbreviations are used for country groups in tables B and C.

APEC Asia Pacific Economic Co-operation

ASEAN Association of South East Asian Nations

EU European Union

OECD Organisation for Economic Co-operation and Development

TABLE A: AUSTRALIA'S TRADE IN GOODS AND SERVICES WITH SELECTED MAJOR TRADING PARTNERS

Country	BALANCE ON GOODS AND SERVICES.....			CREDITS.....			DEBITS.....		
	1998	1999	2000	1998	1999	2000	1998	1999	2000
	\$m	\$m	\$m	\$m	\$m	\$m	\$m	\$m	\$m
China, Peoples Republic of	-2 082	-2 516	-3 041	4 371	4 723	6 828	-6 453	-7 239	-9 869
Germany	-4 495	-4 691	-4 814	2 167	2 031	2 152	-6 662	-6 722	-6 966
Hong Kong (SAR of China)	2 126	1 593	1 948	4 601	3 983	4 647	-2 475	-2 390	-2 699
Indonesia	-1 214	-367	452	3 001	2 969	3 739	-4 215	-3 336	-3 287
Japan	5 860	4 356	8 152	20 807	20 041	25 568	-14 947	-15 685	-17 416
Korea, Republic of	2 072	2 696	4 623	6 572	6 832	9 747	-4 500	-4 136	-5 124
Malaysia	-945	-1 462	-1 970	2 527	2 690	3 190	-3 472	-4 152	-5 160
New Zealand	2 191	3 000	2 650	7 477	8 605	8 807	-5 286	-5 605	-6 157
Singapore	111	221	1 956	4 257	5 617	7 848	-4 146	-5 396	-5 892
Taiwan	1 675	1 492	2 346	4 787	4 636	6 038	-3 112	-3 144	-3 692
United Kingdom	-1 734	-2 054	-3 395	7 516	6 741	7 202	-9 250	-8 795	-10 597
United States of America	-14 304	-14 316	-13 116	12 827	12 886	16 752	-27 131	-27 202	-29 868
<i>Sub-total</i>	-10 739	-12 048	-4 209	80 910	81 754	102 518	-91 649	-93 802	-106 727
<i>All other countries</i>	387	-4 462	-3 105	33 753	32 081	39 809	-33 366	-36 543	-42 914
Total all countries	-10 352	-16 510	-7 314	114 663	113 835	142 327	-125 015	-130 345	-149 641

TABLE B: GOODS AND SERVICES BY SELECTED COUNTRIES AND COUNTRY GROUPS, 2000

Country	CREDITS.....				DEBITS.....		
	<i>Balance on goods & services</i>	<i>Total goods & services</i>	<i>Goods</i>	<i>Services</i>	<i>Total goods & services</i>	<i>Goods</i>	<i>Services</i>
	\$m	\$m	\$m	\$m	\$m	\$m	\$m
Belgium and Luxembourg	215	1 081	1 019	62	-866	-799	-67
Brunei Darussalam	-225	59	43	16	-284	-273	-11
Canada	-412	1 877	1 447	430	-2 289	-1 902	-387
Central America and Caribbean	-89	272	260	12	-361	-333	-28
Chile	39	157	150	7	-118	-84	-34
China, Peoples Republic of	-3 041	6 828	6 066	762	-9 869	-9 159	-710
Fiji	145	791	598	193	-646	-299	-347
France	-1 545	1 220	918	302	-2 765	-2 363	-402
Germany	-4 814	2 152	1 321	831	-6 966	-5 953	-1 013
Greece	-134	243	203	40	-377	-104	-273
Hong Kong (SAR of China)	1 948	4 647	3 594	1 053	-2 699	-1 295	-1 404
Indonesia	452	3 739	2 898	841	-3 287	-2 737	-550
Ireland	-899	334	145	189	-1 233	-1 028	-205
Italy	-1 510	2 097	1 859	238	-3 607	-3 179	-428
Japan	8 152	25 568	22 024	3 544	-17 416	-15 505	-1 911
Korea, Republic of	4 623	9 747	9 082	665	-5 124	-4 859	-265
Malaysia	-1 970	3 190	2 380	810	-5 160	-4 323	-837
Mexico	-136	350	338	12	-486	-460	-26
Netherlands	588	2 123	1 797	326	-1 535	-970	-565
New Zealand	2 650	8 807	6 598	2 209	-6 157	-4 539	-1 618
Papua New Guinea	-278	1 369	989	380	-1 647	-1 449	-198
Philippines	956	1 676	1 531	145	-720	-540	-180
Russian Federation	212	326	268	58	-114	-27	-87
Singapore	1 956	7 848	5 958	1 890	-5 892	-3 762	-2 130
South Africa	362	1 398	1 273	125	-1 036	-862	-174
Sweden	-1 359	366	167	199	-1 725	-1 635	-90
Switzerland	-1 452	560	198	362	-2 012	-1 261	-751
Taiwan	2 346	6 038	5 597	441	-3 692	-3 563	-129
Thailand	-1 090	2 455	1 979	476	-3 545	-2 850	-695
United Kingdom	-3 395	7 202	3 783	3 419	-10 597	-6 820	-3 777
United States of America	-13 116	16 752	11 047	5 705	-29 868	-23 399	-6 469
Africa n.e.s.	1 083	1 631	1 401	230	-548	-188	-360
America n.e.s.	-58	1 193	769	424	-1 251	-850	-401
Asia n.e.s.	1 815	9 801	8 476	1 325	-7 986	-6 724	-1 262
Europe n.e.s.	-886	3 317	2 015	1 302	-4 203	-3 298	-905
Oceania n.e.s.	692	1 129	924	205	-437	-184	-253
Unallocated	861	3 984	1 603	2 381	-3 123	-1 018	-2 105
Total all countries	-7 314	142 327	110 718	31 609	-149 641	-118 594	-31 047
COUNTRY GROUPS							
APEC	1 466	101 924	82 495	19 429	-100 458	-82 890	-17 568
ASEAN	-1 737	19 574	15 290	4 284	-21 311	-16 665	-4 646
EU	-13 990	18 726	12 606	6 120	-32 716	-25 533	-7 183
OECD	-13 795	82 958	63 764	19 194	-96 753	-77 952	-18 801

TABLE C: SERVICES BY SELECTED COUNTRIES AND COUNTRY GROUPS, 2000

Country	CREDITS					DEBITS.....			
	Balance on services	Total services	Transportation	Travel	Other	Total services	Transportation	Travel	Other
	\$m	\$m	\$m	\$m	\$m	\$m	\$m	\$m	\$m
Belgium and Luxembourg	-5	62	n.p.	41	21	-67	0	-21	-46
Brunei Darussalam	5	16	n.p.	12	4	-11	n.p.	-11	n.p.
Canada	43	430	89	284	57	-387	-88	-225	-74
Central America and Caribbean	-16	12	0	4	8	-28	0	-28	n.p.
Chile	-27	7	0	7	0	-34	-19	-14	-1
China, Peoples Republic of	52	762	121	522	119	-710	-357	-252	-101
Fiji	-154	193	85	68	40	-347	-105	-169	-73
France	-100	302	n.p.	205	97	-402	-13	-261	-128
Germany	-182	831	186	511	134	-1 013	-634	-179	-200
Greece	-233	40	n.p.	34	6	-273	-79	-179	-15
Hong Kong (SAR of China)	-351	1 053	295	530	228	-1 404	-680	-500	-224
Indonesia	291	841	158	554	129	-550	-221	-256	-73
Ireland	-16	189	0	155	34	-205	-18	-154	-33
Italy	-190	238	n.p.	202	36	-428	-32	-350	-46
Japan	1 633	3 544	1 217	2 001	326	-1 911	-1 101	-262	-548
Korea, Republic of	400	665	114	496	55	-265	-89	-57	-119
Malaysia	-27	810	101	552	157	-837	-488	-286	-63
Mexico	-14	12	n.p.	8	4	-26	0	-25	-1
Netherlands	-239	326	73	198	55	-565	-205	-91	-269
New Zealand	591	2 209	428	1 206	575	-1 618	-525	-770	-323
Papua New Guinea	182	380	111	114	155	-198	-28	-124	-46
Philippines	-35	145	n.p.	83	62	-180	0	-122	-58
Russian Federation	-29	58	8	46	4	-87	-58	-27	-2
Singapore	-240	1 890	744	763	383	-2 130	-1 521	-356	-253
South Africa	-49	125	n.p.	100	25	-174	-45	-113	-16
Sweden	109	199	40	139	20	-90	0	-31	-59
Switzerland	-389	362	127	188	47	-751	-572	-61	-118
Taiwan	312	441	46	370	25	-129	-26	-91	-12
Thailand	-219	476	132	290	54	-695	-227	-434	-34
United Kingdom	-358	3 419	709	1 717	993	-3 777	-829	-1 626	-1 322
United States of America	-764	5 705	823	1 427	3 455	-6 469	-1 405	-1 664	-3 400
Africa n.e.s.	-130	230	72	110	48	-360	-53	-277	-30
America n.e.s.	23	424	103	99	222	-401	-47	-100	-254
Asia n.e.s.	63	1 325	286	645	394	-1 262	-475	-493	-294
Europe n.e.s.	397	1 302	361	546	395	-905	-181	-610	-114
Oceania n.e.s.	-48	205	36	122	47	-253	-43	-188	-22
Unallocated	276	2 381	994	141	1 246	-2 105	-696	17	-1 426
Total all countries	562	31 609	7 459	14 490	9 660	-31 047	-10 860	-10 390	-9 797
COUNTRY GROUPS									
APEC	1 861	19 429	4 379	9 219	5 831	-17 568	-6 775	-5 449	-5 344
ASEAN	-362	4 284	1 136	2 331	817	-4 646	-2 483	-1 623	-540
EU	-1 063	6 120	1 120	3 448	1 552	-7 183	-1 916	-3 138	-2 129
OECD	393	19 194	3 959	9 145	6 090	-18 801	-5 741	-6 325	-6 735

SERVICES BY STATE

INTERPRETATION OF TRADE DATA BY STATE

9 Tables D and E present, respectively, international services credits (by State of provision) and international services debits (by State of consumption) for 2000, for 11 broad service types and more detailed components. Confidentiality constraints severely restrict the detail that can be provided for some States and Territories. Care should be exercised in interpreting the data. While the State allocation methods for transportation, travel and communication services are considered reasonable, especially for the analysis of movements in the services, the allocation for other services (about 25% of all trade in services) is primarily based on the location of the business reporting the information which serves as a proxy for State of origin/consumption of that service.

10 The international trade in services of the Sydney Organising Committee for the Olympic Games (SOCOG) has been allocated to New South Wales.

TABLE D: AUSTRALIA'S INTERNATIONAL TRADE IN SERVICES CREDITS BY STATE, 2000

	NSW	Vic.	Qld.	SA	WA	Tas.	NT	ACT	Australia
	\$m	\$m	\$m	\$m	\$m	\$m	\$m	\$m	\$m
Transportation services	3 126	2 090	1 339	134	680	8	82	0	7 459
Travel services	7 640	2 382	2 571	613	939	123	126	96	14 490
Business	482	165	301	27	104	7	15	9	1 110
Personal	7 158	2 217	2 270	586	835	116	111	87	13 380
Education-related	1 360	1 057	608	393	178	77	34	10	3 717
Other	5 798	1 160	1 662	193	657	39	77	77	9 663
Communication (a)	585	342	240	159	125	31	14	37	1 533
Construction services	30	1	n.p.	n.p.	n.p.	0	0	0	34
Insurance services	492	258	0	0	0	0	0	0	750
Financial services	422	321	3	0	1	0	0	0	747
Computer & information services	560	106	n.p.	11	10	n.p.	0	0	733
Royalties & licence fees	421	124	17	n.p.	8	n.p.	0	5	589
Other business services	1 930	731	175	34	92	n.p.	n.p.	15	2 991
Merchandising	82	60	n.p.	n.p.	n.p.	n.p.	n.p.	n.p.	215
Other trade related services	248	22	9	n.p.	2	n.p.	n.p.	0	284
Operational leasing services	2	n.p.	n.p.	0	n.p.	n.p.	n.p.	0	13
Professional services	311	123	20	3	n.p.	n.p.	n.p.	n.p.	481
Research and development	91	124	2	4	8	n.p.	n.p.	n.p.	238
Architectural, engineering and other technical services	355	187	72	4	34	n.p.	n.p.	3	655
Agriculture, mining and on-site processing	5	n.p.	n.p.	n.p.	1	n.p.	n.p.	n.p.	24
Services between affiliated enterprises n.i.e.	691	174	10	4	11	n.p.	n.p.	n.p.	890
Other	145	33	2	2	7	n.p.	n.p.	2	191
Confidential items - other business services (b)	0	8	60	17	29	n.p.	n.p.	10	..
Personal, cultural and recreational services	1 210	100	34	63	n.p.	n.p.	n.p.	29	1 461
Audiovisual and related services	1 130	36	n.p.	n.p.	n.p.	n.p.	n.p.	n.p.	1 169
Other personal, cultural and recreational services	80	64	n.p.	n.p.	n.p.	n.p.	n.p.	n.p.	292
Government services n.i.e.	41	14	2	58	23	0	258	426	822
Total confidential items (b)	0	0	48	14	13	16	11	0	..
Total	16 457	6 469	4 429	1 086	1 891	178	491	608	31 609

(a) Communication services includes other services n.i.e.

(b) For cells annotated 'n.p.' the data are included in Confidential items

INTERPRETATION OF TRADE
DATA BY STATE *continued*

11 Transportation services are allocated by State using a combination of indicators including merchandise trade statistics by State and short term overseas passenger arrivals and departures by State of clearance. Overseas passenger departures data by the State where most time was spent are used to allocate the business and personal travel components of travel credits. Education-related travel credits are split using State data provided by the Department of Education, Training and Youth Affairs. Travel debits are split using overseas departures data for resident departures by State.

12 For communication services, a domestic indicator for allocating the consumption of telecommunications and postal services by State in the national accounts is used to approximate the State allocation of the international trade in these services. It is assumed that each State's share of outgoing international calls and terminating connections for incoming international calls will be reasonably well aligned with total service consumption by State or Territory.

FURTHER INFORMATION

13 Further information and longer time series for both calendar and financial year data by region can be obtained by contacting Val Tot on Canberra 02 6252 6419, or fax 02 6252 7219, or email at val.tot@abs.gov.au.

TABLE E: AUSTRALIA'S INTERNATIONAL TRADE IN SERVICES DEBITS BY STATE, 2000

	NSW	Vic.	Qld.	SA	WA	Tas.	NT	ACT	Australia
	\$m	\$m	\$m	\$m	\$m	\$m	\$m	\$m	\$m
Transportation services	-4 782	-2 905	-1 609	-358	-1 052	-37	-117	0	-10 860
Travel services	-4 140	-2 470	-1 556	-507	-1 278	-94	-124	-221	-10 390
Business	-1 096	-644	-404	-134	-341	-26	-31	-54	-2 730
Personal	-3 044	-1 826	-1 152	-373	-937	-68	-93	-167	-7 660
Education-related	-218	-164	-109	-27	-55	0	-14	-27	-614
Other	-2 826	-1 662	-1 043	-346	-882	-68	-79	-140	-7 046
Communication (a)	-621	-498	-324	-133	-170	-43	-17	-33	-1 839
Construction services	0	0	0	0	0	0	0	0	0
Insurance services	-866	-36	0	0	0	0	0	0	-902
Financial services	-343	-184	0	0	0	0	0	0	-527
Computer & information services	-293	-91	-12	n.p.	-3	n.p.	n.p.	n.p.	-428
Royalties & licence fees	-1 137	-458	-21	-76	-22	n.p.	n.p.	n.p.	-1 716
Other business services	-1 271	-1 156	-157	-80	-248	n.p.	n.p.	-5	-2 924
Merchandising and other trade related services	-61	-73	-26	n.p.	-33	n.p.	n.p.	n.p.	-224
Operational leasing services	-208	-673	n.p.	n.p.	n.p.	n.p.	n.p.	n.p.	-895
Professional services	-180	-83	-11	-5	-16	n.p.	n.p.	-2	-302
Research and development	-27	-38	-1	-1	-14	n.p.	n.p.	n.p.	-81
Architectural, engineering and other technical services	-287	-65	n.p.	-30	-17	n.p.	n.p.	n.p.	-457
Agriculture, mining and on-site processing	-1	n.p.	n.p.	n.p.	n.p.	n.p.	n.p.	0	-161
Services between affiliated enterprises n.i.e.	-433	-163	-29	-10	-21	n.p.	n.p.	0	-657
Other	-74	n.p.	n.p.	-2	-17	n.p.	n.p.	n.p.	-147
Confidential items - other business services (b)	0	-61	-90	-32	-130	n.p.	n.p.	-3	..
Personal, cultural and recreational services	-553	-190	-2	n.p.	-1	n.p.	n.p.	n.p.	-811
Audiovisual and related services	-520	n.p.	n.p.	n.p.	n.p.	n.p.	n.p.	n.p.	-670
Other personal, cultural and recreational services	-33	n.p.	n.p.	n.p.	n.p.	n.p.	n.p.	n.p.	-141
Government services n.i.e.	0	0	0	0	0	0	0	-650	-650
Total confidential items (b)	0	0	0	-70	0	-4	-4	-25	..
Total	-14 006	-7 988	-3 681	-1 224	-2 774	-178	-262	-934	-31 047

(a) Communication services includes other services n.i.e.

(b) For cells annotated 'n.p.' the data are included in Confidential items

APPENDIX A: CLASSIFICATION OF OTHER BUSINESS SERVICES

MERCHANTING AND OTHER TRADE RELATED SERVICES	<p>1 <i>Merchanting services</i> covers the purchase of a good by an Australian resident from a non-resident and the subsequent resale of the good to another non-resident. During the merchanting process, the good leaves the country from which it was purchased, but does not enter or leave Australia. Excluded are goods exported from and imported into Australia.</p> <p>2 <i>Trade related services</i> covers commissions on goods and services transactions between (i) resident merchants, commodity brokers, dealers, and commission agents and (ii) non-residents. Included are commissions etc. relating to the sale or leasing of ships or aircraft, as well as auction sales.</p>
OPERATIONAL LEASING SERVICES	<p>3 This item covers leasing and charters of ships, aircraft and other transportation equipment eg. railway car containers, rigs, etc. It excludes leases of ships and aircraft for limited periods (such as a voyage charter) for the carriage of passengers or freight where the lessee does not operate the craft. Such leases are regarded as the acquisition of either freight or passenger services and are included in transportation services. Also excluded are finance leases, leasing of telecommunications lines and leasing of land, buildings and other real estate, and car rentals to foreign travellers.</p>
PROFESSIONAL SERVICES	<p>4 Professional services includes the following four services:</p> <p><i>Legal services</i> covers legal advisory and representation services in any legal, judicial and statutory procedures; drafting services of legal documentation and instruments; certification consultancies; auctioning services; and escrow and settlement services.</p> <p><i>Accounting & auditing services</i> covers the recording of commercial transactions for businesses and others; examination services of accounting records and financial statements; and business tax planning and consulting and preparation of tax documents.</p> <p><i>Advertising, market research and public opinion polling</i> covers the design, creation, and marketing of advertisements by advertising agencies; media placement, including the purchase and sale of advertising space; exhibition services provided by trade fairs; the promotion of products abroad; market research; and public opinion polling abroad on various issues.</p> <p><i>Management consultancy & public relations services</i> covers advisory, guidance and operational assistance services provided to businesses for business policy and strategy and the overall planning, structuring and control of an organisation. It includes management auditing; financial management, market management, human resources, production management and project management consultancy, and advisory, guidance and operational services related to improving the image of the clients and their relations with the general public and other institutions.</p>
RESEARCH AND DEVELOPMENT SERVICES	<p>5 This item covers those services transacted between residents and non-residents that are associated with basic research, applied research, and experimental development of new products and processes, in the sciences, social sciences, and humanities. Included is the development of operating systems that represent technological advances. Excluded are market research, technical studies and consultancy work.</p>
ARCHITECTURAL, ENGINEERING AND OTHER TECHNICAL SERVICES	<p>6 Included in architectural, engineering and other technical services are transactions related to architectural design of urban and other development projects; planning and project design and supervision of dams, bridges, airports, turnkey projects, etc.; and surveying, cartography, product testing and certification, and technical inspection services.</p>

AGRICULTURAL, MINING,
AND ON-SITE PROCESSING
SERVICES

7 Agricultural, mining, and on-site processing services includes:

Agricultural services, which covers services incidental to agriculture (providing agricultural machinery with crew, harvesting, treatment of crops, pest control, animal boarding, care and breeding services), hunting, trapping, forestry and logging, and fishing.

Mining services, which covers services rendered at oil and gas fields; drilling, derrick building, repair and dismantling services, oil and gas well casings cementing, services incidental to mineral prospecting and exploration, and geological surveying.

Waste treatment and de-pollution, which covers the treatment of radioactive waste, stripping work of contaminated soil, cleaning up of pollution, decontamination services and sanitation.

Other on-site processing services, which covers the maintenance and repair of machinery (except transport and office machinery and equipment) and on-site processing and treatment of any kind of product that is not subsequently exported from the processing economy.

SERVICES BETWEEN
AFFILIATED ENTERPRISES
N.I.E.

8 Services between affiliated enterprises not included elsewhere (n.i.e.) covers payments by affiliates to their parent companies representing contributions to their general management costs (for planning, organising, and controlling) and reimbursements of affiliates' expenses settled directly by parent companies and not separately identifiable by the nature of the service acquired by the affiliates, funds transferred by parent companies to affiliates for covering overhead expenses, and any other services between affiliated enterprises that cannot be broken into individual service categories.

OTHER SERVICES

9 This item covers manufacturing services rendered at manufacturing establishments, and services incidental to the manufacturing process. Other business services such as placement of personnel, security and investigative services, translation and interpretation, photographic services, and building cleaning, etc are included in this item, as are payments for local supplies, utility payments, etc. by non-resident businesses engaged in construction services.

FOR MORE INFORMATION...

- INTERNET* **www.abs.gov.au** the ABS web site is the best place to start for access to summary data from our latest publications, information about the ABS, advice about upcoming releases, our catalogue, and Australia Now—a statistical profile.
- LIBRARY* A range of ABS publications is available from public and tertiary libraries Australia-wide. Contact your nearest library to determine whether it has the ABS statistics you require, or visit our web site for a list of libraries.
- CPI INFOLINE* For current and historical Consumer Price Index data, call 1902 981 074 (call cost 77c per minute).
- DIAL-A-STATISTIC* For the latest figures for National Accounts, Balance of Payments, Labour Force, Average Weekly Earnings, Estimated Resident Population and the Consumer Price Index call 1900 986 400 (call cost 77c per minute).

INFORMATION SERVICE

Data which have been published and can be provided within five minutes are free of charge. Our information consultants can also help you to access the full range of ABS information—ABS user-pays services can be tailored to your needs, time frame and budget. Publications may be purchased. Specialists are on hand to help you with analytical or methodological advice.

- PHONE* **1300 135 070**
- EMAIL* **client.services@abs.gov.au**
- FAX* 1300 135 211
- POST* Client Services, ABS, GPO Box 796, Sydney 1041

WHY NOT SUBSCRIBE?

ABS subscription services provide regular, convenient and prompt deliveries of ABS publications and products as they are released. Email delivery of monthly and quarterly publications is available.

- PHONE* 1300 366 323
- EMAIL* subscriptions@abs.gov.au
- FAX* 03 9615 7848
- POST* Subscription Services, ABS, GPO Box 2796Y, Melbourne 3001



2536800008017
ISSN 1328-2778

RRP \$18.00